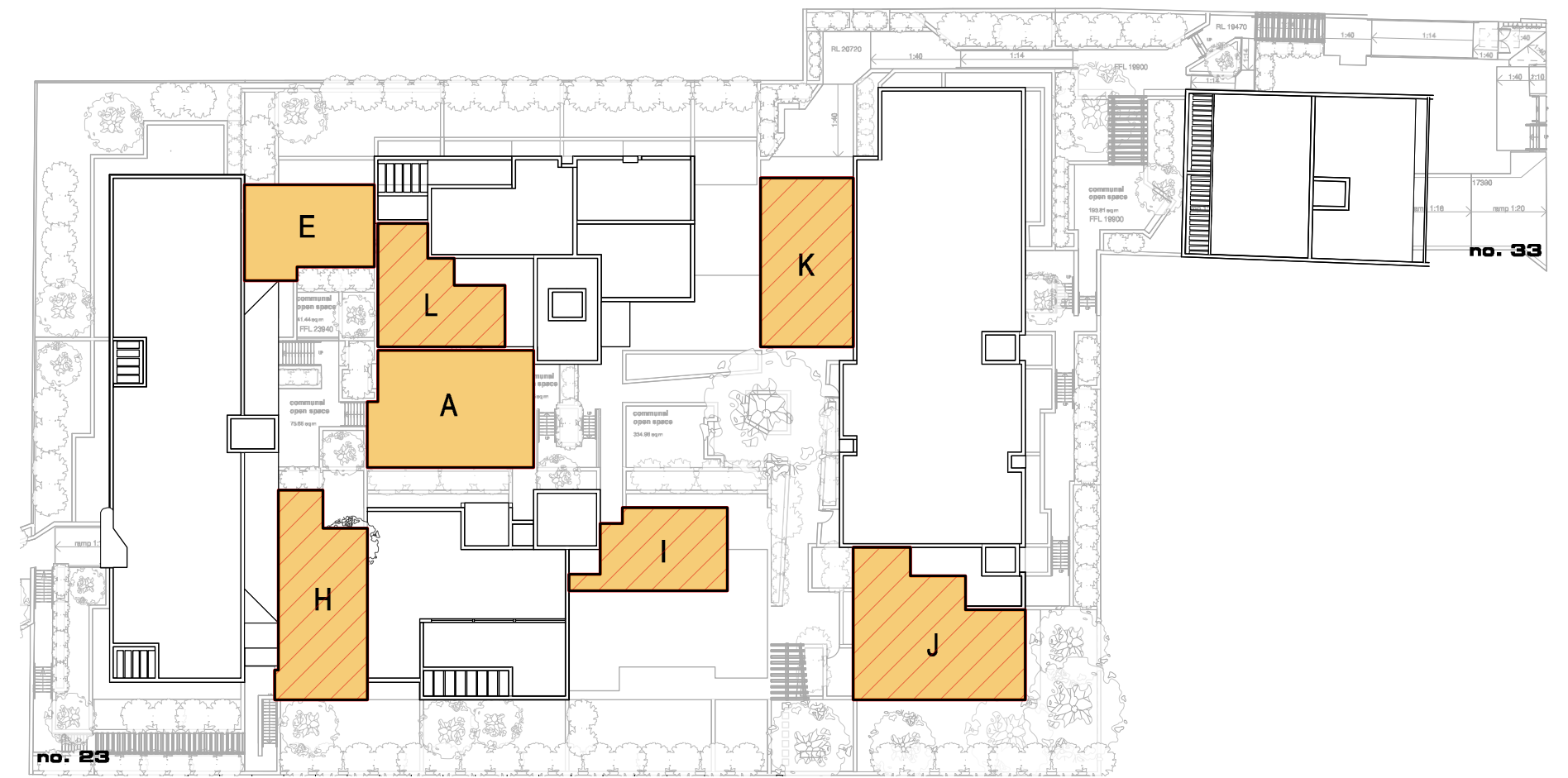


Communal Open Space

- communal open space - courtyards
- communal open space - roof terraces

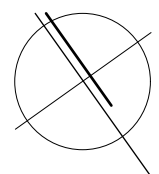


Principal Usable Communal Open Space

- principal usable communal open space - courtyards
- principal usable communal open space - roof terraces

The lift core of each building connects directly to a rooftop communal open space.
 The principal usable communal open space consists of areas A, E, H, I, J, K and L.
 Communal open space A (the upper level of the central courtyard) connects directly to the communal room and communal facilities at level 01.

site area	5579 m2		
	required	proposed	complies
Communal Open Space	25% of site area = 1395 m2	26% of site area = 1454 m2	yes
Principal Usable COS	-	679 m2	
2h solar access to PUCOS	50% of PUCOS = 340 m2	56% of PUCOS = 379 m2 (between 09:30am and 11:30am)	yes



principal usable communal open space - area count
 proposed development

23 Meares Place & 33 Collins Street, KIAMA

kennedy associates architects level 3 / 1 booth street annandale 2038 p + 61 2 9557 6466 f + 61 2 9557 6477 nominated architect - steve kennedy - registration no. 5828



1821 - DA 35 C

C 18/07/18 for S34 meeting